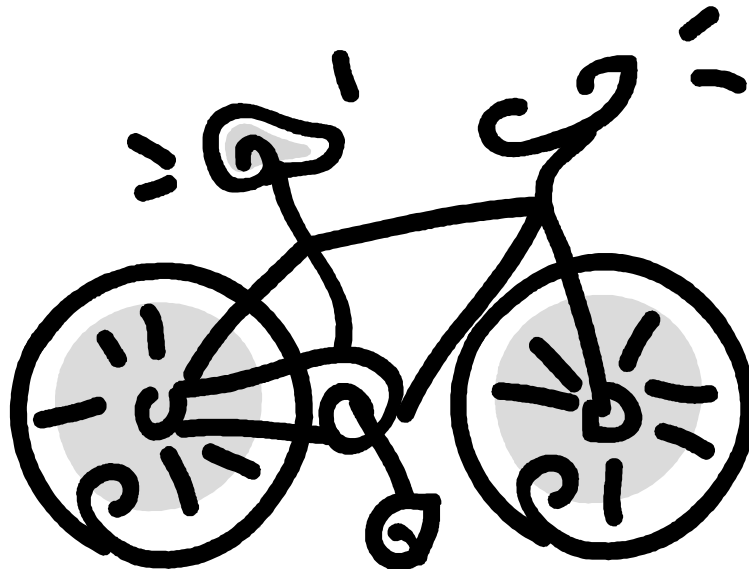


Cycle ride tours



Office de Tourisme du Canton de Rouffach


12 A place de la République
68250 ROUFFACH

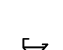
Tel : +33 (0)3 89 78 53 15
Fax : +33 (0)3 89 49 75 30





info@ot-rouffach.com
www.ot-rouffach.com

 **Emergency:** dial the number **112**.

 **Safety rules:** respect the Highway Code; wear a helmet and a reflective jacket.

 **For the environment:** take away your waste or put them in a dustbin.

 **Key:**

	Panoramic view		Picnic area
	Sight		Restaurant

Little bike ride

The villages: Rouffach, Gundolsheim, Munwiller, Meyenheim, Merxheim, Rouffach

Distance: 24 km

Difficulty: easy

Route

Km 0: start in front of the Tourist Office.

Km 0,1: near the restaurant Caveau à la Grappe, turn right.

Km 0,8: before the roundabout, turn right and follow the road along the D83 in direction of the fish pond.

Km 1,0: at the intersection, turn left and follow the road.

Km 3,0: Gundolsheim: *rue du Nord*.

Km 3,1: at the intersection, turn left and follow the *rue principale*.

Km 3,6: follow the direction Munwiller.



Picnic area on the right at the end of the village (*rue Saint-Blaise*).

Km 7,0: Munwiller: *rue de Gundolsheim*.

Km 7,3: at the intersection, turn left in the *rue Principale* and follow the road.

Km 8,1: *rue de Meyenheim*.

Km 8,4: at the intersection, turn right.

Km 8,9: at the road sign stop, turn right in direction of Meyenheim.

Km 9,2: turn right and enter in Meyenheim.

Km 10,1: turn right in direction of Merxheim.



Picnic area on the right at the end of the village near the water tower.

Km 14,0: Merxheim: *rue de la Gare* and follow the road in direction of Guebwiller.

Km 15,0: in front of the tobacco store, turn left in direction of Guebwiller.

Km 17,0: before the bridge, turn right and follow the little road along the D83.

Km 20,7: at the intersection, turn left and cross over the bridge.

Km 21,3: turn right in direction of Rouffach and follow the path.

Km 22,8: Rouffach: *rue de Westhalten*.

Km 23,1: at the road sign stop, turn left in the *rue du 4^{ème} RSM*.

Km 23,3: turn right in the *rue de la Prévoté* and follow the road.

Km 23,5: after the shop Coop, turn right in the *rue du Marché*.

Km 23,7: return at the Tourist Office.

Bike ride through the plain

The villages: Rouffach, Gundolsheim, Munwiller, Meyenheim, Réguisheim, Hirtzfelden, Oberhergheim, Biltzheim, Niederentzen, Rouffach

Distance: 40 km

Difficulty: easy

Route

Km 0: start in front of the Tourist Office.

Km 0,1: near the restaurant Caveau à la Grappe, turn right.

Km 0,8: before the roundabout, turn right and follow the road along the D83 in direction of the fish pond.

Km 1,0: at the intersection, turn left and follow the road.

Km 3,0: Gundolsheim: *rue du Nord*.

Km 3,1: at the intersection, turn left and follow the *rue principale*.

Km 3,6: follow the direction Munwiller.



Picnic area on the right at the end of the village (*rue Saint-Blaise*).

Km 7,0: Munwiller: *rue de Gundolsheim*.

Km 7,3: at the intersection, turn left in the *rue Principale* and follow the road.

Km 8,1: *rue de Meyenheim*.

Km 8,4: at the intersection, turn right.

Km 8,9: at the road sign stop, turn right in direction of Meyenheim.

Km 9,2: follow the road D 201 in direction of Réguisheim on the cycle track.

Km 13,0: turn left and enter in Réguisheim by crossing the D 201. Follow the road.

Km 13,3: at the roundabout, turn left in direction of Munchhouse.

Km 17,1: at the roundabout, take the 4th exit.

Km 19,6: at the intersection, turn right in direction of Hirtzfelden and follow the road D 3 bis.

Km 21,6: turn left in direction Hirtzfelden.

Km 22,8: Hirtzfelden: *rue de Meyenheim*.

Km 23,2: at the intersection, turn left in direction of Rustenhart.

Km 23,3: turn left in direction of Oberhergheim and follow the road.

Km 27,3: follow the road straight in direction of Oberhergheim.



900 m from there, racing circuit **Anneau du Rhin**.

Km 30,3: enter in Oberhergheim and follow the road.

Km 30,7: at the intersection, turn left in direction of Biltzheim and follow the road.

Km 31,5: Biltzheim: *rue principale*.

Km 31,9: follow the road in direction of Niederentzen.

Km 32,6: at the intersection, turn right in direction of Rouffach and follow the road.

Km 37,9: at the intersection, turn left.

Km 38,0: Rouffach.

Km 38,7: at the roundabout, follow the road straight in direction of the town centre.

Km 39,4: turn left.

Km 39,5: return at the Tourist Office.

ECOMUSÉE - BIOSCOPE

The villages: Rouffach, Bergholtz, Issenheim, Raedersheim, Ungersheim, Merxheim, Gundolsheim, Rouffach

Distance: 25 km

Difficulty: medium

Route

Km 0: start in the *rue de Westhalten*, along the hospital.

Km 1,4: turn left (D 18 bis).

Km 1,8: turn right in direction of Bollenberg and follow the road.

Km 3,0: Bollenberg, turn left after the restaurant **Au Vieux Pressoir**.



Follow the path until Bergholtz-Zell.

Km 6,2: turn left on the cycle track in direction of Bergholtz.

Km 7,7: Bergholtz: *rue de l'Eglise* (last street on the right).

Km 8,0: at the road sign stop, turn left in the *rue d'Issenheim* and follow the road.

Km 9,2: at the roundabout, take the 3rd exit in direction of Merxheim.

Km 9,7: after the bridge, turn right in direction of Raedersheim along the D83.

Km 11,0: turn left in direction of Raedersheim.

Km 12,5: Raedersheim: *rue d'Issenheim*.

Km 13,0: at the intersection, turn left in the *rue Principale* and follow the road D4 in direction of Ungersheim.

Km 14,6: Ungersheim: *rue de Raedersheim*.



Ecomusée - Bioscope (9,2 km to go there and back):

Km 15,4: pass by the town hall and turn right in direction of Feldkirch.

Km 15,6: follow the path straight (the road D 44 turn right).

Km 16,1: turn right.

Km 16,4: turn left.

Km 16,9: turn right.

Bioscope:

Km 17,2: turn left.

Ecomusée:

Follow the road straight.

Km 19,2: turn left in direction of the parking from the l'Ecomusée (100m).

Km 15,0: turn left (almost half-turn).

Km 15,1: turn right.

Km 15,8: turn left.

Km 18,5: turn left and pass under the bridge.

Km 18,7: Merxheim: *rue de Réguisheim*.

Km 19,2: at the road sign stop, turn left and follow the road.

Km 19,7: follow the road straight in direction of Gundolsheim.

Km 20,9: Gundolsheim: *rue de Merxheim*.

Km 21,5: at the road sign stop, turn left.

Km 22,0: turn right in the *rue du Nord*.

Km 22,1: turn right in direction of Rouffach.

Km 23,5: turn left.

Km 23,8: cross over the bridge, follow the road straight and enter in Rouffach

Km 24,5: at the intersection in front of the hospital, turn right.

Km 25,2: after the park, turn left. Return in the *rue de Westhalten*.

Schauenberg

The villages: Rouffach, Pfaffenheim, Hattstatt, Pfaffenheim, Rouffach

Distance: 18 km

Difficulty: medium

Route

Km 0: start in front of the Tourist Office.

Km 0,1: near the restaurant Caveau à la Grappe, turn right.

Km 0,2: turn left in the *rue Charles Marie Widor* and follow the road.

Km 0,8: after the bank Crédit Mutuel, turn right.

Km 1,5: in front of the supermarket, turn left and follow the road along de D83 in direction of Pfaffenheim.

Km 3,0: Turn left and enter in Pfaffenheim: *rue du Stade*.

Km 3,1: after the soccer playground, turn right.

Km 3,4: at the intersection, turn left and then the first street on the right.



On the right at the end of the *rue de la Chapelle*, restaurant

Relais au Petit Pfaffenheim.

Take the *rue de la Tuilerie* and follow the road.

Km 4,0: at the intersection, turn right.

Km 4,1: turn left and follow the road along the D 83 until the horticulture Fleurs Burn.

Km 6,0: at the roundabout, go straight and enter in Hattstatt.

Km 6,3: turn left in the *rue du Schauenberg*.

Km 6,8: at the intersection, turn right in direction of Gueberschwih. r.

Km 7,5: enter in Gueberschwih. r. At the roundabout, turn right.

Km 7,9: turn left in the *rue Basse* and follow the road.



On the left, the **church Saint-Pantaleon**, that was built in the 12th century. In 1835 as the church was too small, a new one was built. But from 1850, many cracks in the walls appeared. In 1874 and 1878, a new church was built with a larger nave. The roman bell tower was preserved. Behind the church, there are some archways from an old chapel Saint-Michel, which was an ossuary.



In the centre of the village, there are two restaurants: **Le Goldert** and **La Taverne Médiévale.**

Km 8,3: leave Gueberschwihr and follow the path.

Km 9,8: turn left in direction of the Schauenberg.

Km 11,8: Place of pilgrimage Notre Dame du Schauenberg.



This chapel was founded in the 14th century and dedicate to the Blessed Virgin.

Place of pilgrimage since 1483. Beautiful all-round view over the region.



Catering possible.

Take the same road to go down in direction of Pfaffenheim.

Km 13,8: turn right.

Km 14,3: turn left and enter in Pfaffenheim.

Km 14,5: at the intersection in front of the town hall, turn right.

Km 14,6: follow the road straight in the *rue de Baer*.

Km 14,7: at the intersection, turn right in the *rue du Fossé*.

Km 14,8: at the intersection, go straight in the *rue de Rouffach*.

Km 15,8: turn left, then right and follow the road.

Km 17,1: enter in Rouffach.



Château d'Isenbourg: in the Merovingian time, the King Dagobert II staid in the castle of Rouffach. Another castel, bigger, was built during the Middle Age.

At the beginning of the 19th century, a new castle was built and restaured in 1885. Nowadays, the castel is a 4 stars hotel.

Km 17,3: turn left in the *rue Ris*.

Km 17,6: go straight in the *rue Walch*. Turn left then right in the *rue aux Quatre Vents*.

Km 17,8: at the intersection, turn right in the *rue Charles Marie Widor*.

Km 18,0: at the intersection, turn right.

Km 18,1: at the restaurant Caveau à la grappe, turn left.

Km 18,2: return at the Tourist Office.

Hilly ride

The villages: Rouffach, Pfaffenheim, Gueberschwihr, Osenbach, Wintzfelden, Soultzmatt, Westhalten, Rouffach

Distance: 24 km

Difficulty: difficult

Route

Km 0: start in the *rue de Pfaffenheim*.



Château d'Isenbourg: in the Merovingian time, the King Dagobert II stayed in the castle of Rouffach. Another castle, bigger, was built during the Middle Ages. At the beginning of the 19th century, a new castle was built and restored in 1885. Nowadays, the castle is a 4 stars hotel.

Km 1,5: turn left and follow the road.

Km 2,3: Pfaffenheim: *rue de Rouffach*.

Km 2,5: at the intersection, turn left in direction of the town hall.



On the right at the end of the *rue de la Chapelle*, restaurant **Relais au Petit Pfaffenheim**.

Km 2,8: in front of the town hall, turn left in the *rue du Schauenberg*.

Km 3,0: at the end of the village, turn right in direction of the Schauenberg.

Km 3,5: follow the road in direction of Gueberschwihr.



On the left, the place of pilgrimage **Notre Dame du Schauenberg**. Follow the road in direction of the Schauenberg for 2 km. This chapel was founded in the 14th century and dedicated to the Blessed Virgin. Place of pilgrimage since 1483. Beautiful all-round view over the region. Catering possible.



Km 4,7: Gueberschwihr: *rue de Pfaffenheim* and then *rue Basse*.



On the left, the church **Saint-Pantaleon**, that was built in the 12th century. In 1835 as the church was too small, a new one was built. But from 1850, many cracks in the walls appeared. In 1874 and 1878, a new church was built with a larger nave. The roman bell tower was preserved. Behind the church, there are some archways from an old chapel Saint-Michel, which was an ossuary.



In the centre of the village, there are two restaurants: **Le Goldert** and **La Taverne Médiévale**.

Km 5,5: follow the road straight (*rue du Nord*) in direction of the Couvent Saint-Marc.

Km 6,3: Couvent Saint-Marc.



The convent Saint-Marc was built in 676 by Dagobert II. This Benedictine abbey was part of the bishopric from Strasbourg. During the Middle Ages, the abbey was devastated many times. It was rebuilt in the 11th century. In 1762, it was restored by the abbey from Ebersmunster.

Follow the road in direction of Osenbuhr.

Km 7,3: locality Osenbuhr. Follow the road in direction of Osenbach.

Km 11,5: Osenbach: *rue du Bickenberg*.

Km 12,2: at the intersection between the fountain and the baker's, turn right in the *rue des Fontaines* and follow the road.

Km 12,4: *rue du Moulin*.

Km 13,0: follow the road in direction of Wintzfelden.

Km 14,0: Wintzfelden: *rue d'Osenbach* and then route principale.

Km 14,8: follow the road in direction of Soultzmatt.

Km 16,8: pass along the Source de Soultzmatt and enter in Soultzmatt.

Follow the road in direction of Westhalten.



The **source of Soultzmatt** was probably known in the Roman epoch but it was first exactly mentioned in the year 1272 by a Franciscan monk. The source was discovered again in the 17th century and thermal baths were built in 1662 (extended in the 18th century). Louis Nessel bought the source in 1838 and gave it his name. A fire destroyed a big part of the thermal baths in 1891 and only the export from the water in bottles continued. Nearby, there is the Water Museum.

Km 19,3: pass through Westhalten and follow the road (D 18 bis).

Km 21,9: turn left and follow the path in direction of Rouffach.

Km 23,3: Rouffach: *rue de Westhalten*.

Km 23,7: turn left in the *rue des Vosges* and then *rue Louis Pasteur*.

Km 24,3: return *rue de Pfaffenheim*.

Vallée Noble - Schaeferfetal - Bollenberg

The villages: Rouffach, Westhalten, Soultzmatt, Orschwihr, Rouffach

Distance: 19 km

Difficulty: medium

Route

Km 0: start in the *rue de Westhalten*, along the hospital.

Km 1,4: turn right in direction of Westhalten (D 18 bis).

Km 2,0: follow the direction of Westhalten town center on the right.

Follow the road until the town hall.



Neuland: turn right in the *rue de l'Eglise* and follow the road for 1,5 km.

Km 3,6: follow the road until the intersection, turn right and enter in Soultzmatt (D 18 bis).

Km 4,4: pass through Soultzmatt by following the road straight.

Km 7,6: after the Sources de Soultzmatt, turn left in direction of the Val du Pâtre.



The **source of Soultzmatt** was probably known in the Roman epoch but it was first exactly mentioned in the year 1272 by a Franciscan monk. The source was discovered again in the 17th century and thermal baths were built in 1662 (extended in the 18th century). Louis Nessel bought the source in 1838 and gave it his name. A fire destroyed a big part of the thermal baths in 1891 and only the export from the water in bottles continued. Nearby, there is the Water Museum.

Km 9,3: turn left, follow the road for 300m and turn right.



Behind the soccer playground, there is the largest **Rumanian military cemetery** in France which was unveiled in 1924 by the King Ferdinand from Rumania.

Km 9,6: Schaeferfetal Chapel.



The place Schaeferfetal was first mentioned in the year 1339. The early chapel was probably built in the 14th century. The oldest part of the present church is dated from the 16th century.

Follow the road in direction of Orschwihr.

Km 11,7: Orschwihr: *rue du Val du Pâtre*.

Km 12,1: at the intersection with the *rue de l'Eglise*, turn right.

Cross the *rue de Soultzmatt* in direction of the church and continue along it.

Km 12,3: follow the road straight along the cemetery.

Km 12,6: turn right in direction of the chapel Sainte-Croix.

Km 13,1: parking.



On the right, there is the **chapel “Sainte Croix”**. The Bollenberg is also an antique meeting place for the witches, which was mentioned in many witchcraft proceedings in Rouffach. In the night between the 14th and the 15th August, the chapel (called the witches chapel) is illuminated by the well-known Haxafir (witches fire).

Turn left and follow the path marked by a red rhomb.



Restaurant **Au Vieux Pressoir**.

Km 14,9: follow the road.

Km 16,2: turn left in direction of Rouffach.

Km 17,5: at the intersection, turn left in direction of Westhalten.

Km 17,9: turn right in the vineyard in direction of Rouffach.

Km 19,2: return *rue de Westhalten* in Rouffach.

Wine Route

The villages: Rouffach, Westhalten, Orschwihr, Bergholtz, Issenheim, Guebwiller, Soultz, Wuenheim, Hartmannswiller, Berrwiller, Bollwiller, Feldkirch, Raedersheim, Merxheim, Rouffach.

Distance: 45 km

Difficulty: medium

Route

Km 0: start in the *rue de Westhalten*, along the hospital.

Km 0,8: turn right in direction of Westhalten (D 18 bis).

Km 2,0: Westhalten: *rue de Rouffach*. Follow the road.

Km 2,8: near the town hall, turn left in the *rue de Soultzmatt*.

Km 3,5: turn right in direction of Soultzmatt (D 18 bis).

Km 3,9: turn left in direction of Orschwihr and follow the road.

Km 6,6: enter in Orschwihr.

Km 6,7: turn left in the *rue du Général de Gaulle* and follow the road.

At the intersection, turn left and follow the road until the cycle track. Turn right in direction of Bergholtz

Km 9,2: turn right and enter in Bergholtz in the *rue de l'Eglise* (last street on the right).

Km 9,5: at the road sign stop, go straight in the *rue de Guebwiller*.

Km 10,5: after the last house, turn left and follow the path in direction of Issenheim.

Km 11,2: enter in Issenheim.

Km 11,3: go straight in the *rue Pflück* by crossing the road D 3 bis.

Km 11,7: near the church, turn right in the *rue du Couvent*.

Km 11,9: turn right in the *rue de Guebwiller* and follow the road in direction of Guebwiller.

Km 13,1: enter in Guebwiller.

Km 13,8: turn left in the *rue du Chemin Noir* in direction of Soultz.

Km 14,7: turn left and follow the road D 429.

Km 15,6: at the 2nd traffic lights, turn right and then left. Follow the road.

Km 16,5: turn right in direction of Jungholtz. Follow the *route de Jungholtz*.

Km 17,5: turn left in direction of Wuenheim.



Storks park.

Km 17,6: in front of the storks park, turn left and enter in Wuenheim in the *rue de la Fonderie*.

Km 17,9: turn left in the *rue des Jardins* and follow the road.

Km 18,2: turn left in the *rue Principale*.

Km 18,4: at the intersection, turn right in direction of Hartmannswiller and follow the road D 5.

Km 19,7: enter in Hartmannswiller and pass through the village.

Km 20,1: at the roundabout, go straight in direction of Berrwiller.

Km 21,6: turn left and enter in Berrwiller. Follow the road.

Km 23,1: turn right in direction of Bollwiller.

Km 24,7: at the intersection, turn right in direction of Bollwiller.

Km 26,2: Bollwiller: *rue du Vieil-Armand*.

Km 29,6: at the intersection, turn right in the *rue de Sultz*.

Km 29,8: at the roundabout, turn left in direction of Feldkirch.

Km 30,5: after the railway track, Feldkirch: *rue Principale*.

Km 31,1: turn left in the *rue de Raedersheim* and follow the road.

Km 32,5: pass under the bridge.

Km 33,5: Raedersheim: *rue de Feldkirch*.

Km 33,8: at the intersection, turn left.

Km 34,3: pass under the railway track.

Km 34,4: near the church, turn right in direction of Merxheim and follow the road.

Km 34,9: at the end of the village, take the cycle track.

Km 36,2: Merxheim: *rue de Raedersheim*.

Km 37,2: at the road sign stop, turn left in direction of Gundolsheim.

Km 37,5: in front of the tobacco store, turn left in direction of Guebwiller.

Km 39,5: before the bridge, turn right and follow the little road along the D83.

Km 43,5: at the intersection, turn left and cross over the bridge.

Km 44,2: turn right in direction of Rouffach and follow the path.

Km 45,5: return in Rouffach: *rue de Westhalten*.

Along the Rhine

The villages: Rouffach, Niederentzen, Rustenhart, Balgau, Fessenheim, Grißheim (D), Zienken (D), Neuenburg-am-Rhein (D), Chalampé, Bantzenheim, Munchhouse, Ensisheim, Réguisheim, Merxheim, Gundolsheim, Rouffach

Distance: 73 km

Difficulty: easy

Route

Km 0: start in front of the Tourist Office.

Km 0,1: near the restaurant Caveau à la Grappe, turn right.

Km 0,8: at the roundabout, go straight and cross over the bridge.

Km 1,5: turn right in direction of Niederentzen and follow the road.

Km 6,5: Niederentzen: *route de Rouffach*. Pass through the village.

Km 7,1: follow the direction of Rustenhart.

Km 12,3: Rustenhart: *rue Principale*.

Km 12,9: at the roundabout, go straight in direction of Balgau and follow the road.

Km 18,6: Balgau.

Km 18,7: take the cycle track on the right in direction of Fessenheim. Enter in Fessenheim.

Km 20,1: leave the cycle track and turn left in the *rue de la Première Armée*.

Km 20,4: at the intersection, turn right in direction of Blodelsheim.

Km 20,7: after the church, turn left in the *rue du Rhin*.

Km 21,1: leave Fessenheim and take the cycle track.

Km 22,3: turn left in the *Cité Koechlin*.

Km 22,5: turn right in the *rue des Saules*.

Km 22,8: at the intersection, turn left.

Km 23,0: turn right in direction of Hartheim.

Km 23,5:



Energies Museum and hydraulic power station.

Km 24,1: cross over the bridge from the Grand Canal d'Alsace (locks).

Km 24,5: cross over the bridge from the Rhine in direction of Germany and follow the road.

Km 24,7: turn left and follow the path.

Km 35,7: at the intersection with the *Mülhauser Strasse*, turn right.

Km 36,0: at the intersection with the road B 378, turn right.

Km 36,8: cross over the bridge from the Rhine in direction of France.

Km 37,0: cross over the bridge from the Grand Canal d'Alsace.

Km 37,3: turn right and enter in Chalampé.

Km 37,5: after the shop Ecomarché, follow the *avenue de la Gare*.

Km 37,7: at the intersection, turn left in the *rue Pierre-Emile Lucas*.

Km 38,2: leave Chalampé and take the cycle track in direction of Bantzenheim.

Km 39,2: at the roundabout, enter in Bantzenheim in the *rue du Général de Gaulle* and follow the road.

Km 39,9: near the church, turn left.

Km 40,1: at the traffic lights, cross the road and go straight in the *rue de Battenheim*.

Km 40,6: leave Bantzenheim and follow the road.

Km 43,9: turn right and take the cycle track.

Km 46,3: leave the cycle track and turn left on the road D8.



Poney Parc in Blodelsheim: follow the cycle track for 3,4 km.

Km 48,6: turn right in direction of Munchhouse.

Km 49,3: at the roundabout, turn left in direction of Ensisheim.

Km 56,0: Ensisheim: *Octrois*. At the intersection, turn right and follow the road D201.

Km 57,8: at the roundabout, turn left in direction of Ensisheim *Centre*.

Km 58,0: before the shop Norma, turn right.

Km 58,3: at the intersection, turn right in direction of the swimming pool.

Km 58,5: Eiblen: follow the path.

Km 60,5: at the intersection with the road D 201 in Réguisheim, turn left.

Km 61,3: turn left in direction of Merxheim and follow the road.

Km 66,1: Merxheim: *rue de Réguisheim*.

Km 66,4: at the road sign stop, turn left in direction of Gundolsheim.

Km 68,3: Gundolsheim: *rue de Merxheim*.

Km 68,8: at the road sign stop, turn left in direction of Rouffach.

Km 69,4: turn right in the *rue du Nord*.

Km 69,5: follow the road in direction of Rouffach.

Km 70,8: turn left.

Km 71,2: cross over the bridge and go straight.

Km 71,8: Rouffach. At the intersection, turn right.

Km 72,3: turn right in the *rue du Stade*.

Km 72,5: turn left in the *rue Thiébaud Walter*.

Km 72,7: turn right.

Km 73,0: return at the Tourist Office.